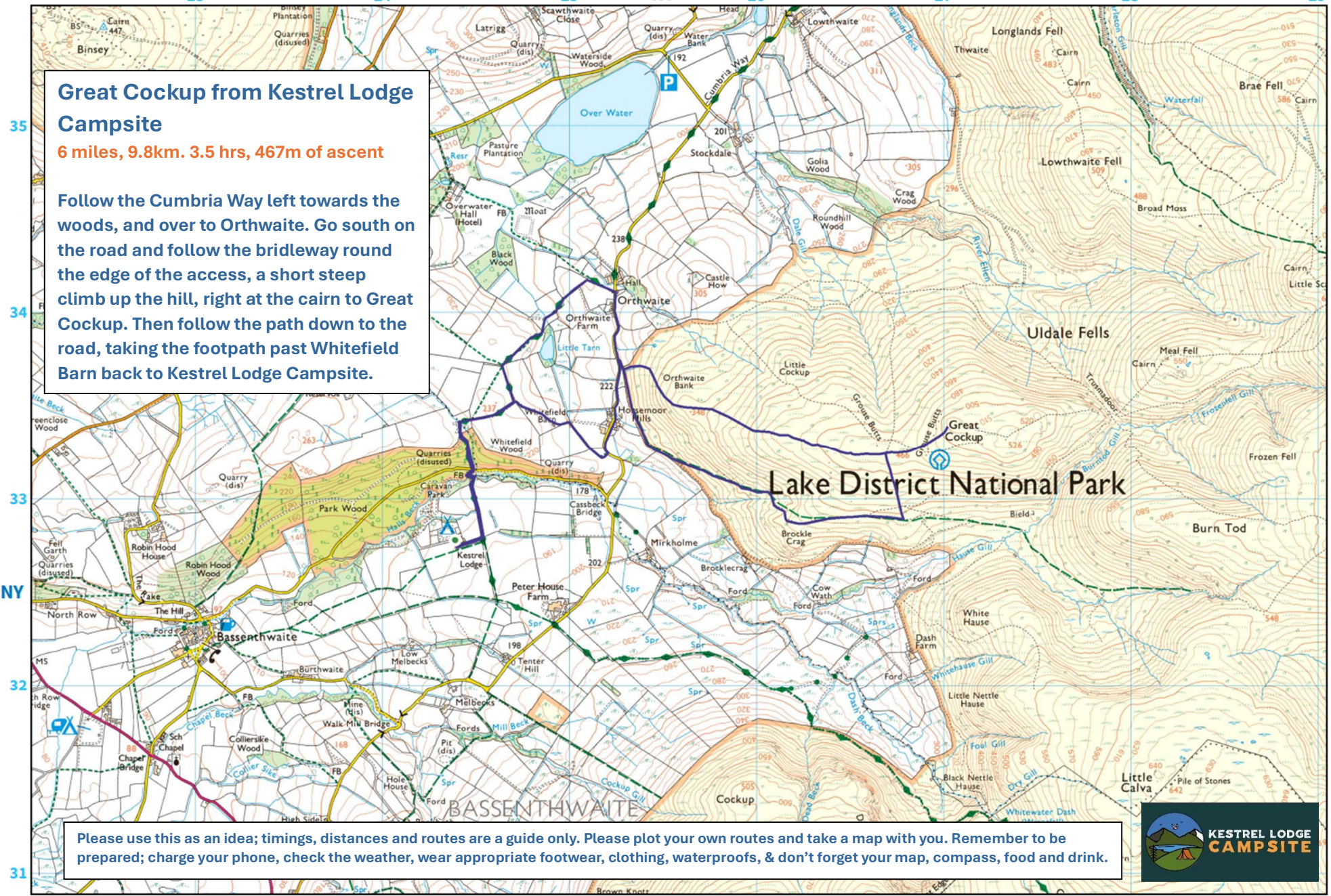


23 24 25 NY 26 27 28 29

Great Cockup from Kestrel Lodge Campsite

6 miles, 9.8km. 3.5 hrs, 467m of ascent

Follow the Cumbria Way left towards the woods, and over to Orthwaite. Go south on the road and follow the bridleway round the edge of the access, a short steep climb up the hill, right at the cairn to Great Cockup. Then follow the path down to the road, taking the footpath past Whitefield Barn back to Kestrel Lodge Campsite.



GREAT COCKUP FROM KESTREL LODGE CAMPSITE

Please use this as an idea; timings, distances and routes are a guide only. Please plot your own routes and take a map with you. Remember to be prepared; charge your phone, check the weather, wear appropriate footwear, clothing, waterproofs, & don't forget your map, compass, food and drink.



1 km 0.5 mi